

Puyallup-White River LIO Quarterly Meeting

DECEMBER 9, 2025

Agenda



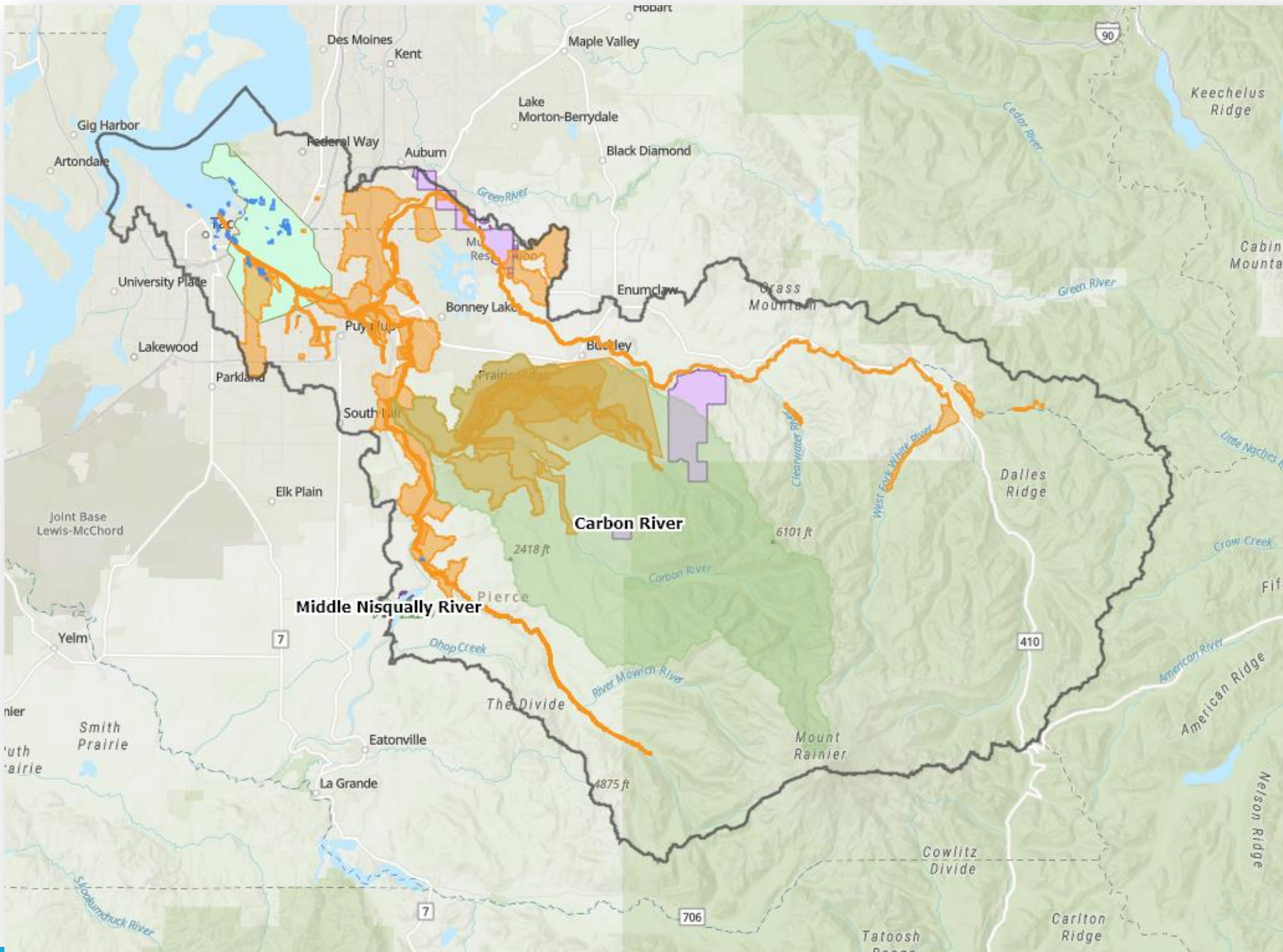
Time	Session	Speakers
10:00	Get to Know Partners in the PWR LIO	All
10:15	What is the PWR LIO and What is its Role in the Watershed?	Cindy Haverkamp, PWR LIO Chair; Kristen Durance, LIO Coordinator
10:30	Network Mapping	All
10:50	Break	All
11:00	Breakout Discussions <ul style="list-style-type: none">• Topic 1: Climate and Health• Topic 2: Stormwater• Topic 3: Floodplains & Estuaries	All
11:50	Wrap-up & Next Steps	All
12:00	Adjourn the PWR LIO Meeting!	



What is the PWR LIO?

...AND WHAT IS ITS ROLE IN THE WATERSHED?

Puyallup White River (PWR) LIO



[Source: Pierce County, Washington - SimpleEnglish Wikipedia](#)



Board Members & Officers	Role
Robby Wright	President
Angela Dillon	Vice President
Kurt Fremont	Secretary
Mark Palmer	Treasurer
Erik McDonald	Communications Officer
Allan Warren	Member
Cindy Callahan	Member
Tom Kantz	Member
Mark Heckert	Member
Laurie Larsen-Pugh	Member
Dana Coggan	Member
Kristen Evered	Member
Bryan Schermerhorn	Member
Stephanie Echard	Member
Vacant	Member

- The PWR LIO is a subcommittee of the PRWC
- The LIO Executive Committee is the PRWC Board
- The Watershed Council is also coordinating the **Puyallup Watershed Conservation Land Trust** as a home for the **Puyallup Community Forest**.

PWR LIO Leadership Team

Name	Affiliation
Allan Warren	Bonneville Environmental Foundation
Cindy Haverkamp (PWR LIO Chair)	Tacoma-Pierce County Health Department
Robby Wright	City of Sumner
Tom Kantz	Pierce County

PWR LIO Participating Organizations



- Port of Tacoma
- South Puget Sound Salmon Enhancement Group
- Tacoma Pierce County Health Department
- WA Dept. of Ecology
- WA Dept of Fish & Wildlife
- Washington State University
- Puyallup Tribe of Indians
- City of Puyallup
- City of Tacoma
- City of Sumner
- Metro Parks Tacoma
- Pierce Conversation District
- Pierce County
- Puyallup River Watershed Council



Successes in the PWR LIO

Puyallup Watershed Conservation Land Trust and Community Forest

The PRWC is supporting the development of the **Puyallup Watershed Conservation Land Trust**, a new Land Trust that will eventually house and manage a **Puyallup River Community Forest**.

- This community forest will be managed and owned on behalf of local communities in the Upper Puyallup Watershed to provide them with secure and reliable access to a thriving forest ecosystem with publicly accessible spaces for recreation, learning, and cultural practices, while protecting water quality and wildlife habitat.
- The forest will be managed and operated by the currently-forming Puyallup Watershed Conservation Land Trust.
- Support from the National Park Service's Rivers, Trails, and Conservation Assistance Program has been essential to success.



Watershed Small Grants Program

- Pierce County and the PWR LIO fund the small grants program to support community projects that improve habitat and water quality (\$20k total for 2025)
- Grants can be awarded to nonprofits, schools, teachers, businesses, and individuals
- LIO project awards are up to \$2,500 and must be in the Puyallup-White River Watershed

2024 Puyallup River Watershed Grant Recipients

- Fruitland Grange: Community Garden
- Foothills Rails-to-Trails Coalition: Stewardship Work Party
- Foss Waterway Seaport: Commercial Mobile Pump-out
- Franklin Pierce School Farm: Native Plants for Water Treatment Pond
- Harbor WildWatch: Environmental Education in the Puyallup Watershed
- Puyallup Tribe: Canoe Landing
- South Sound Beaver Recovery: 2024 Beaver Relocations
- Tacoma Public Schools: Tacoma Salmon in the Classroom
- Tacoma Tree Foundation: Hilltop or Eastside Tree Share

2025 Awardees will be announced next week!



South Prairie Creek Preserve

- Pierce Conservation District & Pierce County acquired this site in 2005 which was formerly a dairy farm
- PCD & PC have led restoration efforts of the 129 acres site consisting of floodplain, riparian, and forested habitat along .5 mile of South Prairie Creek
- Restoration projects have included:
 - Excavation of .5 mile of a historic side-channel
 - Installation of large woody debris structures
 - Demolition of former dairy buildings
 - Installation of tens of thousands of native plants
- The PWR LIO held a site field trip on July 10, 2024

A photograph of a calm lake at dusk or dawn. In the foreground, the blue hull of a canoe points towards the center of the frame. The water is still, reflecting the dark silhouettes of the trees on the far banks. The sky is a pale, hazy grey. The overall mood is peaceful and quiet.

PWR LIO Ecosystem Recovery Plan and Action Plans

PWR LIO Ecosystem Recovery Plan



Equity and Human
Wellbeing



Climate Change



Salmon



Estuaries



Floodplains



Forests



Farms and
Agricultural Lands



Stormwater and
Water Quality

LIO ACTION PLANS

- Describe the work that needs to happen locally to advance the Puget Sound Action Agenda
- Describes what is needed (funding, capacity, new policies, etc.) to advance that work

Action Plans Include...

- Clear connection between the local barriers/pressures/challenges, proposed solutions (i.e., actions), and the Action Agenda Strategies and Actions
- Clear project/action description (who would like to do what where to achieve what outcome)
- Distinguish between local and regional actors
- Estimated cost for local work (rough estimates are fine)
- Staff/capacity needs for local work (rough estimates are fine)

Action Plans do not need to be perfect –
adaptively managing them will be an iterative process

PWR LIO Action Plans

Past: On-Site Septic Action Plan Pilot

- Received \$183k to provide funding to landowners to improve and maintain septic systems in the Watershed

Current: Healthy Shorelines Action Plan

- Received \$150k of funding to support a project outlined in the Action Plan

Future: Floodplains and Estuaries Action Plan

- The PWR LIO is beginning to scope projects for the Floodplains and Estuaries Action Plan. Part of this will happen today during the breakout section of the PWR LIO meeting!

Contact Information

TO BE SUBSCRIBED TO THE PWR LIO NEWSLETTER PLEASE EMAIL
HMORRIS@ROSSSTRATEGIC.COM





Network Mapping - Directions

Step 1: Pick a topic group (Floodplains & Estuaries; Climate & health; OR Stormwater)

Step 2: **On scrap paper, map your current connections within your topic area:**

Who do you regularly share information about this topic?

What role does each person play? (practitioner, project implementer, funder, regulator, researcher, technical assistance provider, etc.)

Post your sticky notes on the wall for your topic – Place them anywhere but if you see related people already up on the wall it's ok to start to cluster sticky notes together.

STEP 3: Pattern Discussion - As a group at your topic station, discuss what you're seeing:

- What patterns do you notice?
- Who are the "hubs" that appear multiple times?
- What roles are missing or underrepresented?
- Where are the gaps in information flow?



Breakout Discussions

In your breakout groups please follow the below steps:

1. Go around to introduce yourself with name and organization
2. Individual reflection – On Separate stick notes write down:
 - **Projects:** Current efforts/initiatives underway in this topic area (one per note)
 - **Barriers:** Key obstacles or challenges preventing progress at the local or regional level (one per note)
 - **Opportunities:** Potential areas for new work or collaboration (one per note)
3. Gallery Walk to **read** what other have posted and **move sticky notes to cluster** similar items together
4. In groups of 3-4 discuss:
 - What patterns do you notice across projects, barriers, and opportunities?
 - What's missing? What surprises you?
 - Where are the leverage points - places where action could have outsized impact?
 - How do the barriers relate to the opportunities?
5. **Report Out:** Each small group shares 1-2 key insights with the whole topic group.

Thank You!

