



Climate Resilient Riparian Systems Lead

Partner Updates on Funding Opportunity
November 2024



Today's Agenda

1. Partner informed Investment Plan
2. Investment Priorities
3. Proposal Structure
4. Solicitation 101
5. Future Opportunities

Climate Resilient Riparian Systems Lead

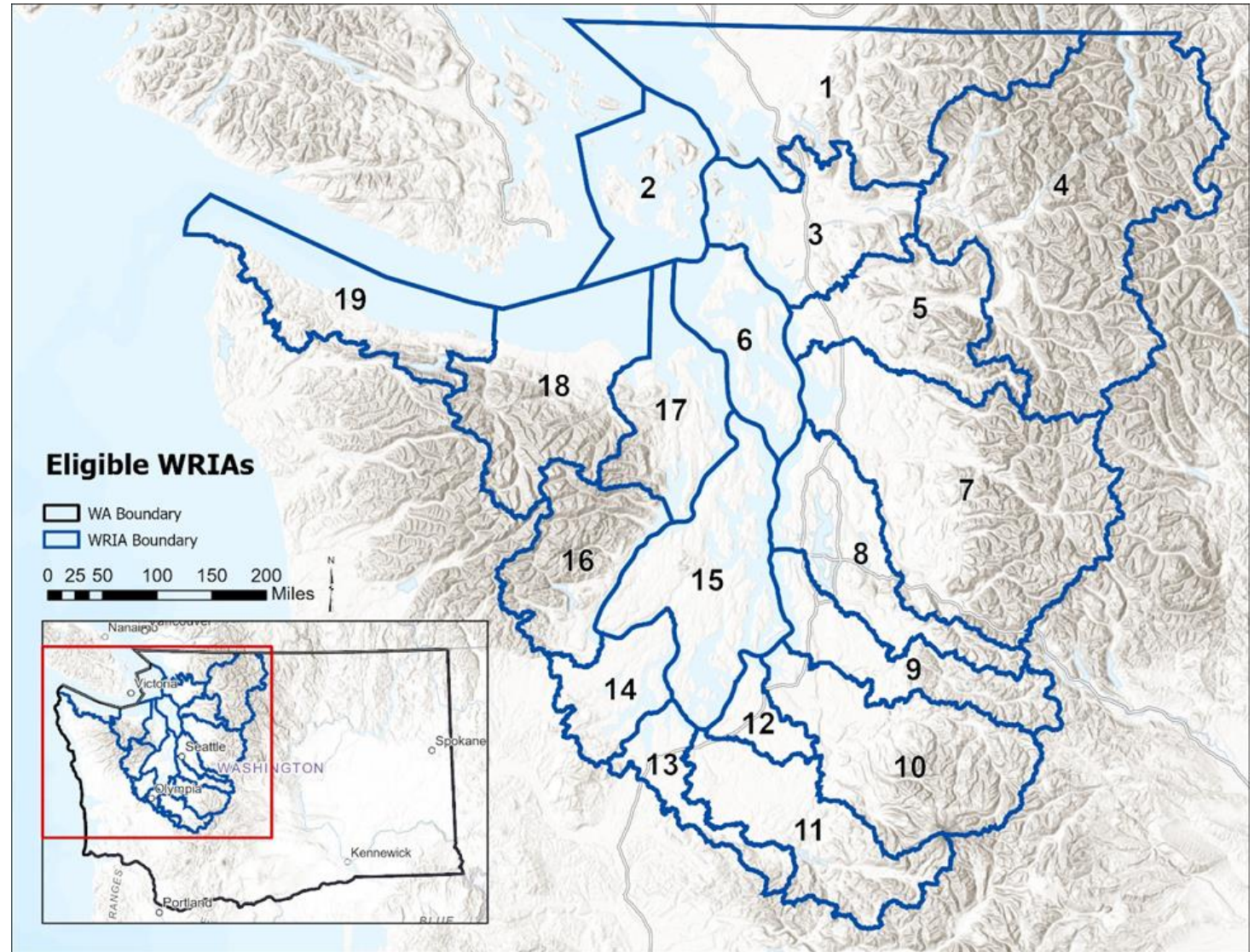
- **\$25M Federal (EPA) funding**
 - 7 year Agreement
- Coalition with **State Conservation Commission** and **Bonneville Environmental Foundation**
- Support restoration and protection of riparian areas in Puget Sound
- Innovative approaches to accelerate recovery



Geographic Scope

Puget Sound Basin

All rivers and streams draining to Puget Sound as mapped by water resource inventory areas (WRIA) 1 through 19.



Partner Engagement → Investment Priorities

- Tribal engagement plan
- Gov-to-Gov consultation, NWIFC meetings
- LIO's, LE's
- Riparian Workshops
 - Sno/Stilly
 - North Sound
 - South Sound
 - Olympic Peninsula



Summary Report of Input from Puget Sound Riparian Professionals Climate Resilient Riparian Systems Lead

Kayla Seaforth,
Bonneville Environmental Foundation

Libby Gier and Michelle Quast,
Washington State Department of Ecology

For the **Shorelands and Environmental Assistance
Program**

Washington State Department of Ecology
Olympia, Washington

August 2024, Publication 24-06-013



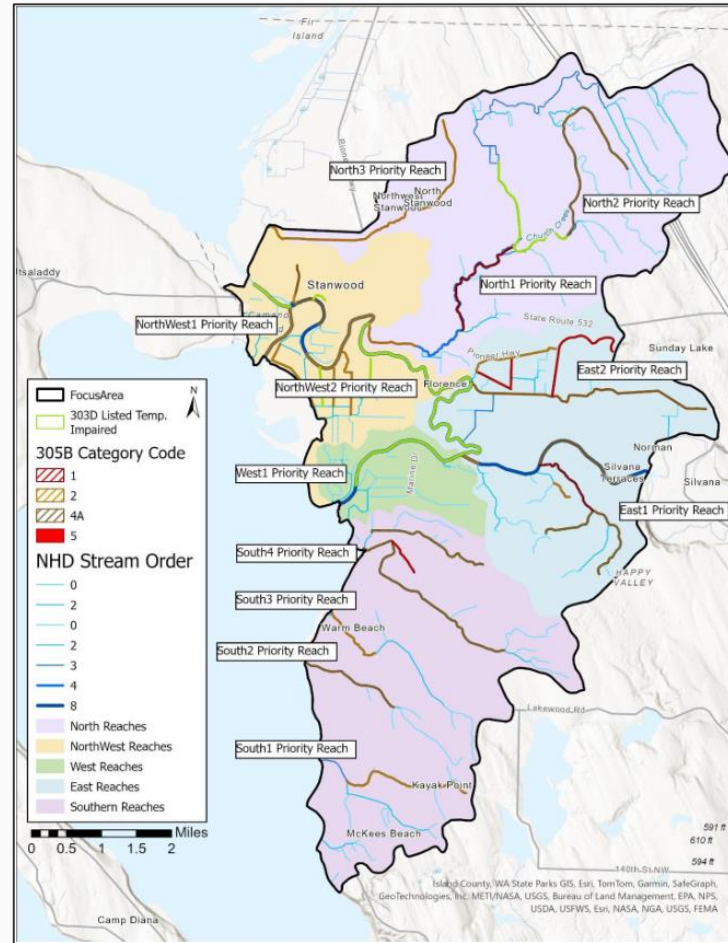
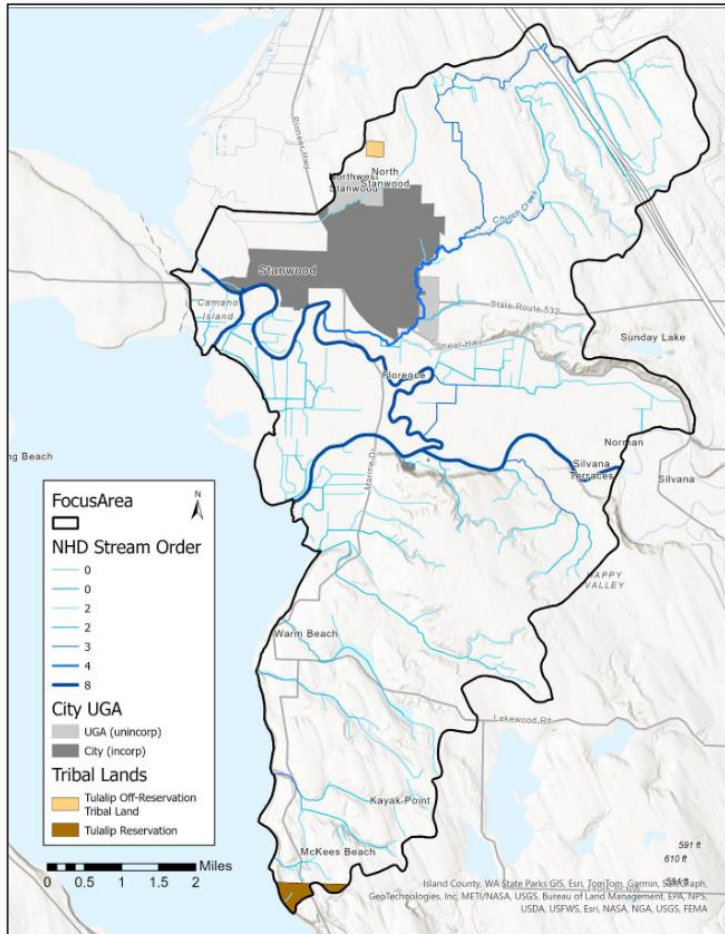
5 Themes Identified Through Engagement Activities

- Engaging private landowners to achieve more riparian restoration and protection
- Long term site stewardship and monitoring
- Support for native plants and propagation
- Implementation and organizational capacity
- Conservation and enhancement of intact, quality riparian areas

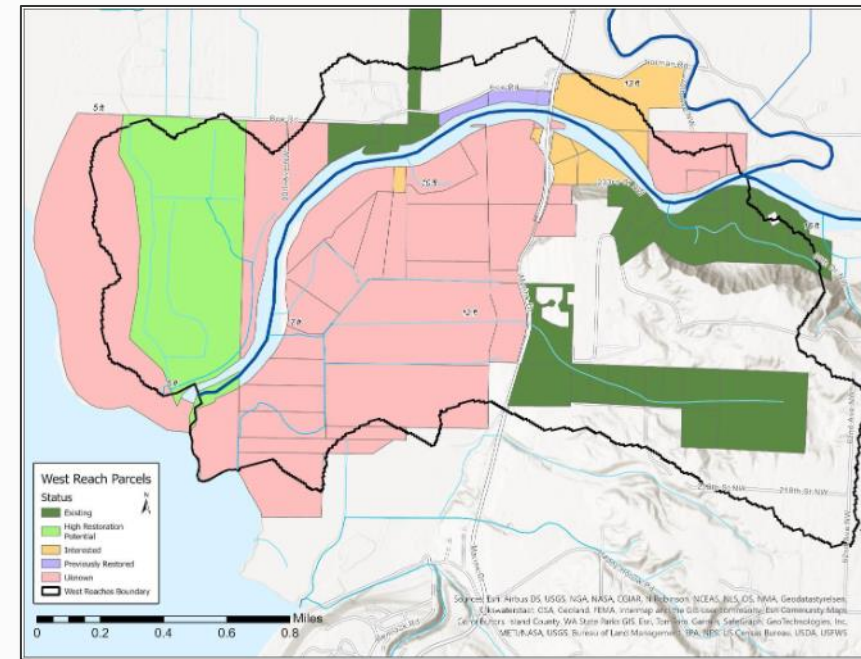
Investment Plan and Priorities

- Invest in Riparian Programs at a watershed-scale – Focus Areas
 - Reach-scale Planning and Outreach
 - Native Plant Materials – Propagation, procurement, holding, nurseries
 - Landowner Incentives – Ecosystem Services/Commodity Based Payments
 - Restoration Implementation
 - Maintenance, Monitoring, and Adaptive Management
 - Permanent Protection of Riparian Habitat
- Right Place, Right Partners, Right Strategy, Sustained Investments

Riparian Program Focus Area



Describe context at multiple scales – Reach to neighborhood



Looking for Programmatic Proposals

- Strategy of program matches Focus Area/Reach scale:
 - Salmon Recovery and Water Quality Priorities
 - Land Use and Landowner demographics
- Proposals across multiple Investment Priority categories to create a holistic program that can be sustained
 - Provide flexibility in grant management to address emerging opportunities
 - Potential for streamlined funding in the future

Reach-scale Planning and Outreach

- Focus on local collaboration and engagement efforts to support a holistic and efficient reach-scale restoration of riparian function
- Reach-scale plan priority for evaluating and approving implementation activities
- Includes activities associated with:
 - regional coordination and planning
 - data collection for restoration prioritization
 - landowner engagement and recruitment to improve riparian management



Native Plant Materials: Plant propagation, procurement, holding facilities, and small nursery support

- Increase the accessibility, diversity and quality of site-appropriate and pest and pathogen free plant materials and facilities to produce native plants for riparian restoration and enrichment and tend these plants until out planting
- This includes support for:
 - Increased access to diverse, site appropriate, climate resilient plant materials
 - Capacity and implementation funds for new and existing plant holding facilities or small nurseries to augment production
 - Implementation of best management practices for pest and pathogen testing, management and early detection rapid response (EDRR)
 - Irrigation efficiency upgrades, materials use, scaling activities, and training

Riparian Restoration Implementation

- Focus on improving and restoring functional riparian systems along rivers and streams both at new sites and at existing reach-scale priority restoration sites
- This includes costs associated:
 - Project planning and project management
 - Plant procurement, site preparation, natural bank stabilization
 - Planting, plant establishment, and site maintenance for the initial 1-5 years after planting occurs

Maintenance, Monitoring and Adaptive Management

- Focus on providing long-term riparian project support needs, learning from project successes and failures, and applying adaptive management
- This includes costs associated:
 - Maintenance of existing riparian projects in priority watersheds that are outside of their original funding window and need targeted support for improved functionality
 - Long term monitoring data collection efforts, and adaptively managing projects where site changes have led to impaired riparian function
 - Invasive weed control, thinning, underplanting
 - Monitoring, and adaptive management planning

Landowner Incentives

- Focus on incentivizing riparian restoration for landowners.
- This includes costs associated with harvestable agroforestry plantings and installation of other agricultural Best Management Practices (BMPs) that improve agricultural operations while providing riparian protection (e.g. livestock fencing, watering troughs, additional BMPs can be proposed for consideration).
- Applicants are invited to propose new incentives, which may be standalone or stacked with existing incentive programs or easements to leverage the potential and increase landowner participation (these will be considered on a case-by-case basis for eligibility).

Permanent Protection of Riparian Habitat

- Focus on permanently protecting riparian zones in priority watersheds where reach-scale plans for restoration and protection are in place.
- This includes funding for conservation easements and acquisitions, or other proposed activities that stabilize or secure the conservation and cultural values of existing riparian areas.
- Riparian areas may be currently degraded, natural or established restoration sites, but must be located in the focus area described in the proposal and justified with mapping and contextual resources.

Future Eligible Proposal Activities: Landowner Incentives

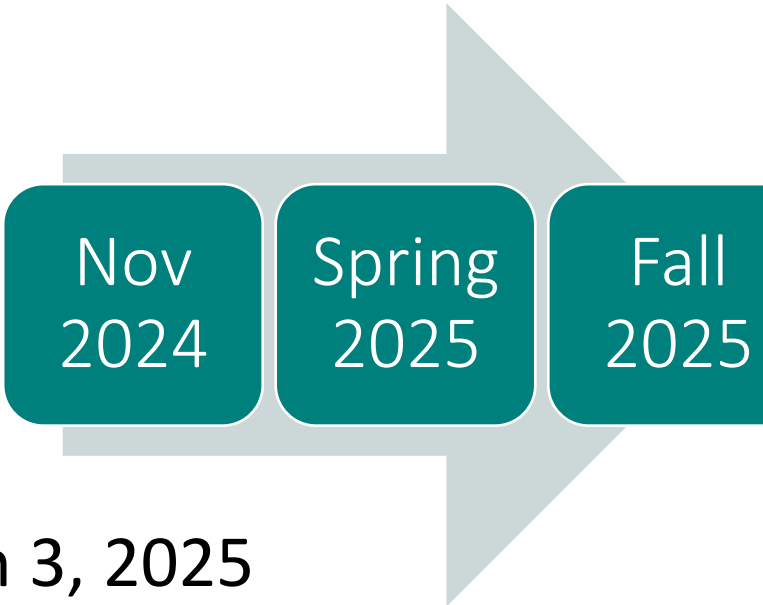
- Not eligible for funding now – Future amendments to Grant Guidelines
- Consider including these activities in a programmatic plan and provide details about this intent in the application (*potential for future funding opportunity*)
- Focus on incentivizing riparian restoration for landowners.
- This includes costs associated with developing, implementing and supporting incentive programs, such as direct ecosystem service payments.
- In future CR2SL solicitations, applicants are invited to propose new incentives, which may be standalone or stacked with existing incentive programs or easements to leverage the potential and increase landowner participation (these will be considered on a case-by-case basis for eligibility).

Future Eligible Proposal Activities: Landowner Incentives

Activities to consider for future:

- Incentive payments based on western WA market rates or commodity pricing; (model and amount TBD);
- Ecosystem service payments to landowners for implementation of riparian restoration and protection (model and amount TBD);
- Purchase and installation of non-native harvestable trees and shrubs (e.g. fruit and nut trees, blueberries, etc.) (model and amount TBD);
- Maintenance support stipends provided to landowners performing maintenance (invasive weed control) themselves (model and amount TBD).

Projected Funding Available & Key Dates

- ~\$9 million
 - Future solicitations are anticipated, dependent on Ecology receiving full EPA award
 - Potential Spring 2025 Solicitation
 - Late-summer/early Fall 2025 Solicitation
- 
- Notification to successful applicants: March 3, 2025
 - Contract development: March – July 2025
 - Total project period: May 2025- June 2030

Minimums and Maximums

- Minimum awards of \$500,000
- Maximum awards of \$2,750,000
- No match



Funding Information Resources



November 2024 Solicitation Funding Guidelines



- Climate Resilient Riparian Systems webpage
- Applicant and Recipient Technical Resources webpage - templates located here!
- Applicant technical assistance virtual office hours:
 - December 12 from 9-11 am
 - January 8, 2025, from 1-3 pm
- Ask a human:
 - Libby Gier libby.gier@ecy.wa.gov



Eligible Applicants

- Special purpose districts (conservation districts, flood control districts, water improvement districts, etc.)
- Local government: counties, cities/towns
- Federally recognized Tribes and Tribal organizations
- Non-profit organizations that are recognized as tax-exempt by the Internal Revenue Service
- Institutions of higher education if the project is not included in the institution's statutory responsibilities

Ineligible Applicants

- State agencies
- For-profit entities
- *Cannot apply and cannot be lead applicants on a proposal, however they may serve as supporting partners with a non-profit, or otherwise eligible entity, to submit applications.*



Ineligible Proposals & Activities

- Proposals that do not have a direct benefit to riparian restoration efforts in Puget Sound watersheds
- Proposals located outside of WRIs 1-19
- Single implementation site project proposals: not demonstrating a reach-scale plan or approach, no connection to an ongoing reach-scale effort
- Culvert removal, installation, repair, or replacement
- Instream activities that require use of big equipment or heavy machinery
- Mitigation projects
- Projects solely for flood control
- Scientific research unrelated to riparian restoration or watershed prioritization



See Chapter 1.5 of the [Funding Guidelines](#) for a complete list of ineligible activities



Riparian Buffer Width Requirements

- CR2SL will fund riparian buffers at and above the Core Zone buffer widths (See Ecology's [Voluntary Clean Water Guidance for Agriculture](#))
- Core Zone widths are based on stream hydrology, bankfull width.
- Buffer widths must be measured starting from the ordinary high-water mark and apply to both sides of the stream where accessible.
- [Mapping tool indicates which buffer width applies.](#)

Stream Category	Ephemeral	Intermittent & Perennial			
Bankfull Width	All widths	<5 ft	5-30 ft	30-150 ft	>150 ft
Minimum Buffer Width (Core Zone)	35 ft	65 ft	80 ft	100 ft	125 ft
Inner (Middle) Zone Width	0-25 ft	0-25 ft	0-25 ft	0-25 ft	0-25 ft
Outer Zone Width	155-180ft	125-150 ft	110-135 ft	90-115 ft	65 – 90 ft
Total RMZ Width	215 ft	215 ft	215 ft	215 ft	215 ft

Tell us if you're interested in applying

Interest in Applying: Climate Resilient Riparian Systems Funding Opportunity for Fall 2024

Please submit this form to indicate interest in applying for the following funding opportunity from the Climate Resilient Riparian Systems Lead. This is not a required form to apply.

Priority funding categories:

- Collaborative, reach-scale planning and outreach;
- Native plant materials;
- Landowner incentives;
- Riparian restoration implementation;
- Maintenance, monitoring, and adaptive management;
- Permanent protection of riparian habitat;

Applications will be open on November 5, 2024 and close on January 15, 2025. Information and updates on the grant funding opportunity are available here: <https://ecology.wa.gov/about-us/payments-contracts-grants/grants-loans/find-a-grant-or-loan/climate-resilient-riparian>

Your replies will help the funding team advise you on eligible activities, connect you with resources for developing a strong application, communicate with you during the application period, and help us understand how much interest there is in the funding opportunity to inform future investments. The information you provide will be shared with CR2SL coalition staff and partners but **will not** be used as part of the evaluation process. Responses will not affect the scoring of your application or final funding determinations.

Sign up for the listserv



DEPARTMENT OF
ECOLOGY
State of Washington

Subscribe/Unsubscribe

Thank you for choosing to receive emails from Ecology. Enter your email to manage your subscriptions. On the email preference page you can subscribe to lists or delete lists you no longer want to receive messages from.

Email Address

*

Submit

Cancel

Your contact information is used to deliver requested updates or to access your subscriber preferences.

[Privacy Policy](#) | [Cookie Statement](#) | [Help](#)



Questions:

Contact Libby Gier

Libby.gier@ecy.wa.gov